

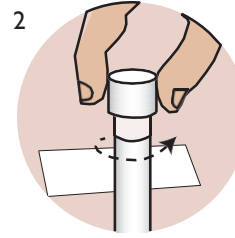
# Throat Swab

## Before you start:

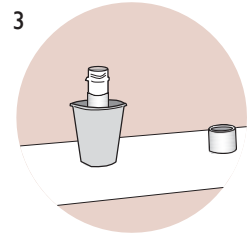
- Read all instructions.
- If you are collecting more than one sample, use the correct tube for each body part (labelled throat, rectum or vagina).
- If you spill liquid from the tube, you will need to start again and request a new tube or kit.



1 Wash your hands with soap and water.

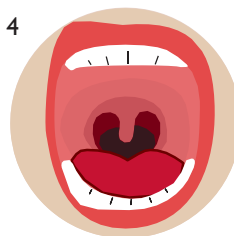


2 Place a paper towel down on a clean, flat surface. Twist the cap off the tube.



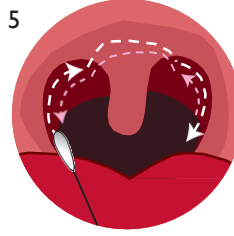
3 Put the cap down with the inside surface facing up. Place the tube upright on the flat surface.

If you want, you can use a cup to keep the tube upright.



4 Take the swab out of the package. Do not touch the soft end of the swab with your hands or other surfaces.

Open your mouth as wide as you can.



5 Put the soft end of the swab to the very back of your throat.

Rub along the walls of the back of your throat for 10-30 seconds. Try not to touch your tongue or the side of your cheeks.

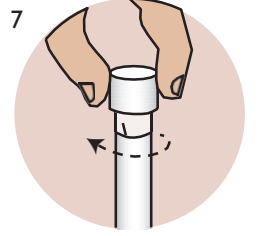
It's OK if you gag.



6 Put the soft end of the swab in the tube.

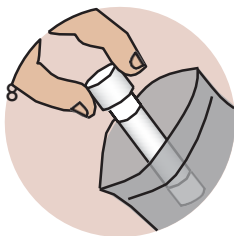
Break the swab at the **score line** by pressing it against the side of the tube.

**If the liquid in the tube spills, ask for a new tube.**



7 Twist the cap back on the tube tightly.

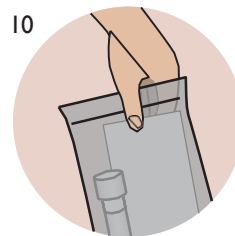
**Score line**  
(break here)



8 Put the tube in the plastic biohazard bag.



9 Wash your hands with soap and water.



10 Give the bag back to the healthcare provider.

## If you are not collecting your sample at the clinic:

- Make sure the tube is labelled with your name and date of birth.
- Seal the plastic biohazard bag with your sample inside and your paper lab form in the outside pocket.



BC Centre for Disease Control  
Provincial Health Services Authority

## Worried you are not doing this correctly?

Research shows collecting your own swab is as effective as having it done by a healthcare provider.